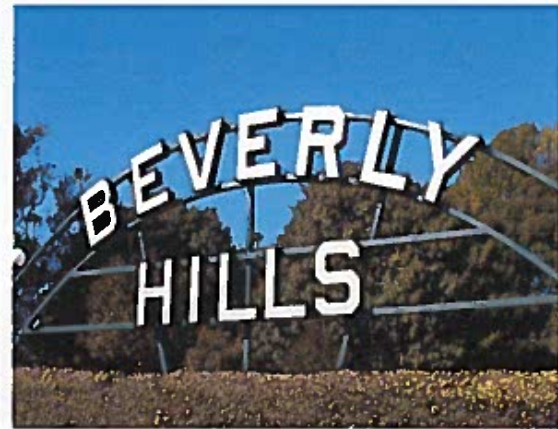
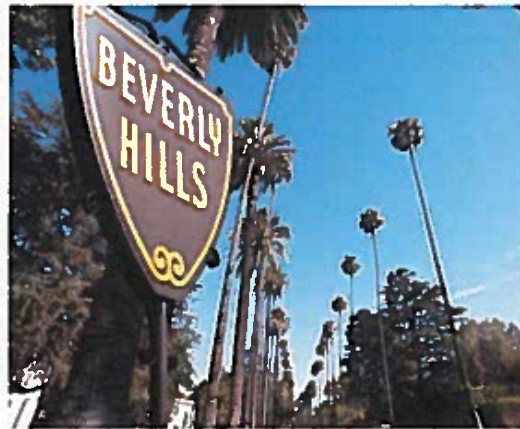
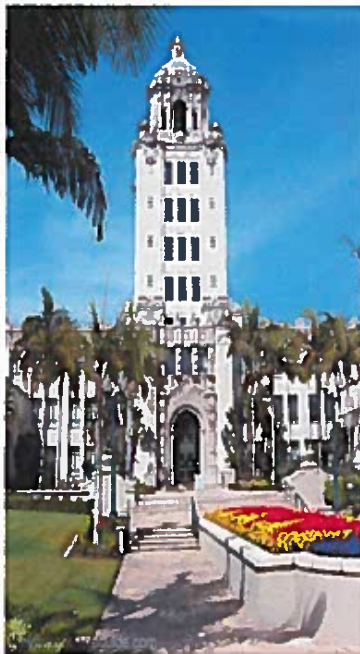


PSOMAS



City of Beverly Hills
North Santa Monica Blvd Reconstruction
Traffic & Parking Commission
May 04, 2015

Construction Contracting





Traffic Mitigation

➤ Traffic & Parking Commission Review:

March 5: Overview of City Council direction and selected lane closure scenario

May 4: Review of contracting process/examples of base construction mitigation measures

June 7: Review of project-specific construction mitigation measures

Post June 7: Refine measures, public outreach per City Council direction



Construction Contracting

- Contractor Bidding Documents:
 - Construction Drawings
 - Specifications
 - Standard: control the work in a general way; common from one job to the next
 - Project Specific: control the contractors work and written for each job
 - Project Schedule
 - Contract
 - Describes in detail all responsibilities of the Contractor



Traffic Mitigation Baseline

- Typical (baseline) Traffic Mitigation Requirements for Contractor (for inclusion in construction bidding documents):
 - Traffic Handling Plan (e.g., allowable lane closures)
 - Lane Closure Alternative Selected by City Council in January 2015
 - Typical Work Hours
 - Monday – Saturday, 8 am to 6 pm



Traffic Mitigation Baseline (continued)

- Holiday Restrictions
 - Municipal Code (New Year's Day, Memorial Day, Independence Day, Labor Day, Thanksgiving Day, Christmas Day)
 - High Holy Days (Rosh Hashanah, Yom Kippur, Passover)
- Other non-work days
 - Day after Thanksgiving
 - December 24 through January 2
 - Affaire in the Garden



Traffic Mitigation Baseline (continued)

- Employee Parking Plan/Restrictions
 - Require all employees to park off-street (no residential parking)
- Signage
 - Changeable message boards at City Entrances
- Submittal of Traffic Control Plans
 - Proper placement of cones and signage
 - Staffing
 - Requires approval by Traffic Engineer



Construction Manager

- Construction Manager (hired separately from contractor) will provide Public Outreach services:
 - Public Outreach Manager
 - Staffing for project phone line
 - Neighborhood/community meetings
 - Develop and Manage Public Information Program
 - Public outreach material
 - City Webpage
 - Newsprint
 - Social Media (e.g., facebook/twitter)
 - Coordinate with neighboring jurisdictions, Caltrans and Metro



Traffic & Parking Commission

- For June 4th TPC discussion:
 - Discussion of peak-hour parking restrictions (e.g., South Santa Monica Boulevard)
 - Discussion of extended work hour restrictions
 - Mitigation measure toolbox (e.g., diverters)
 - Work hour restrictions beyond baseline (e.g., holiday shopping)



Construction Contracting

➤ Goals of Construction Mitigation Plan

- Provide sufficient parameters to minimize impacts to City residential and business areas
- Gives contractor enough flexibility to develop a construction plan that expedites construction and/or reduces costs.
- Allows flexibility to change mitigation measures based on changing traffic patterns
- Keeps public informed of project